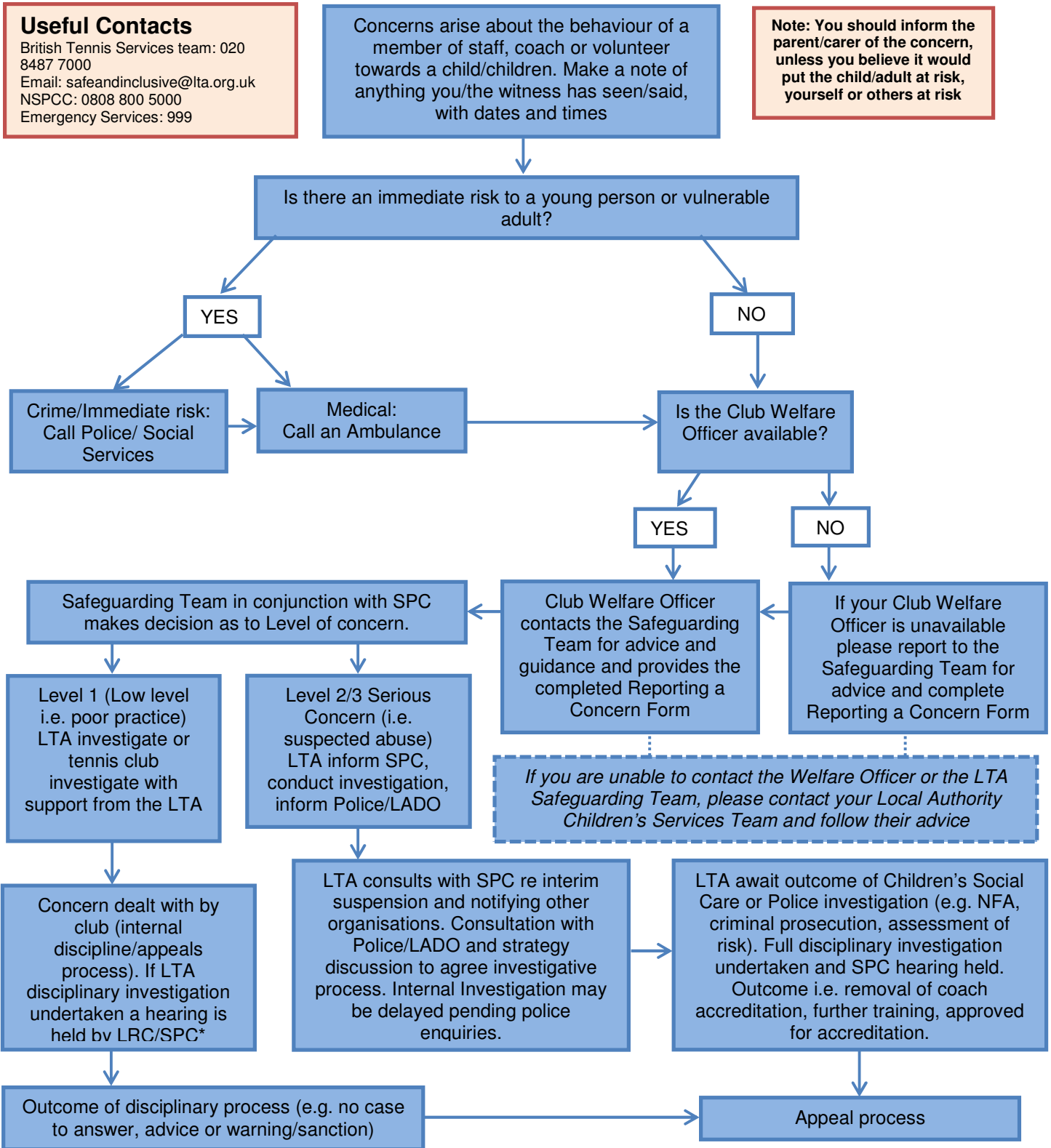


# Reporting a Safeguarding Concern within the Tennis Environment



\*SPC – Safeguarding and Protection Committee  
 \*LRC – Licensing and Registration Committee

# Reporting a Safeguarding Concern outside the Tennis Environment

What to do if you are worried that a child is being abused outside the tennis environment (e.g. at home, school or in the community) but the concern is identified through the child's involvement in tennis

**Useful Contacts**  
British Tennis Services team: 020 8487 7000  
Email: [safeandinclusive@lta.org.uk](mailto:safeandinclusive@lta.org.uk)  
NSPCC: 0808 800 5000  
Emergency Services: 999

Member of staff, coach or volunteer made aware of concerns about child's welfare or safety (e.g. suspicions of bullying at school, allegations of abuse within the family etc.) Make a note of anything the young person/witness has said, and what you have seen with dates and times

**Note: You should inform the parent/carer of the concern, unless you believe it would put the child/adult at risk, yourself or others at risk**

